

LIBBY SPEARS

Founder, Bravo cc
Educate Liberate Entertain
SPEAKER KIT 2022





Libby Spears

is the founder of Bravo cc, a Communication and Consulting venture that helps organizations shape confident leaders. She works with organizations across the globe, including K-12 and Higher Education.

Her story starts at Bowie Elementary in Lubbock, Texas.

A precocious (nice word for trouble-making) kid, her earliest lessons in leadership started with a life long relationship with her elementary school principal, Bill Roach (where she spent an inordinate amount of time in his office). She found her place in the world when she joined the speech and debate team at her high school. Her dream to become an educator led her to pursue degrees in

communication studies at Texas Tech University and The University of North Texas. She taught college for ten years, leaving the college classroom for the corporate classroom. In 2004 she formed Bravo cc and her diverse client lists speaks to how in demand the Bravo cc team is today. Whether on stage, in the classroom, working on a consulting project, or building custom content, she is dedicated to shaping confident leaders.

One of Libby's missions is to use Bravo cc to help educators tackle the unique leadership challenges in public education and higher education. Libby and her team work with administrators, faculty and staff to develop outstanding communication skills so they can lead with **purpose, power, and potential**. Utilizing the custom Bravo cc Leadership Framework, we pour into educators because an educator should never be asked to pour from an empty cup. When you invest time, money, and resources in your faculty and staff, these empowering experiences impact the entire school, district, and community. Together, you learn, grow, and transform. Walking side by side, these efforts change the very culture of your organization.

Libby is not just an educator. She is a professed coffee addict (Grande Vanilla Latte please), mom to Maddie and Trinity, remembers way too much pop culture trivia from the 1970s and 1980s (hello Gen X!), was a debate nerd in high school and knows every word to the 1980s rap classic, Bust a Move.

Read on to learn more about working with Libby and the team at Bravo cc.

Keynote / Convocation

"Doing Time in the Principal's Office" Leadership Lessons Learned from My Elementary School Principal

Ask any adult who knew me as a kid and I bet you a dollar to a donut the word BRAT will come up. I was a brat, so I hold no ill will toward their honesty. I am from the generation of corporal punishment at school, a paddling is what you had coming your way if you continuously misbehaved in the classroom. And despite how much time I spent in the office of my principal, Mr. Bill Roach, I came away with zero "licks." In fact, he never threatened to paddle me. Instead he took time with me. I talked and he listened. He did ask why I kept showing up in his office, but the truth is a child has little understanding of the why behind their behavior. To say the time spent in Mr. Roach's office was a God send would be an understatement.

The term **Emotional Intelligence** would not be coined until 1991 when it emerged from the world of psychology and slowly made its way into the mainstream. Mr. Roach was the ideal model of an emotionally intelligent leader, well before EQ was on everyone's mind. And because of that, I am a better person. You know the impact a teacher has on a child's development and life. My teachers were my angels. Mr. Roach was the head angel. We maintained our friendship until he died, tragically, in 2006. At his funeral, I had the (surreal) pleasure of reconnecting with my elementary teachers as we celebrated the life of a man who changed so many kid's lives at Bowie Elementary.

Today I understand Mr. Roach **MODELED CONFIDENT LEADERSHIP** and while it took years for the seeds he planted in me to fully bloom, he showed me what it looks like to be a leader. He had a gentle approach and I like to believe he knew I wasn't a BAD kid, I was a kid that was bored and needed to be challenged. While I don't want to give away all the BIG lessons that came out of our friendship, I will tell you this: Every kid needs a Mr. Roach in their life.

In this fun and thought provoking keynote, I relay the **SEVEN leadership lessons I learned from Mr. Roach**. I hope to inspire and motivate, of course. More importantly, I share how you can use leadership to model lessons for those around you. After all, the job of the leader is to create new leaders. No matter your role, what you do matters. We all can show up as leaders.

Professional Development

Let Bravo cc educate, liberate, and entertain your faculty, staff, and administrators. Our workshops are ideal for working with your Executive Team, Professional Development Days before kicking off the new school year and throughout the year, administrator training, and end of year events.

“Stronger Together” A Strengths Finder Workshop + Coaching. More than 20 million people worldwide have taken the CliftonStrengths Assessment. I introduce the concept of strengths to your team and make an argument for why it MUST be a part of your districts culture. Culture starts at the top. Working with your leadership team, I walk through the assessment, discuss how to use it for team building and coaching, and offer ways to incorporate strengths throughout your organization. A strengths based culture raises engagement and creates strong connections across the district. Offered as a 1/2 day or full day workshop.

Ideal Audience: All district, start with your executive team.

**Cost does not include the purchase of the Clifton Strengths Assessment 34 Report (\$49.99/person).*

**Ask about our Monthly Series for your organization's leaders.*

“The High EQ Leader” Social Emotional Learning is critical for young people to develop early in life. In this thought provoking session we explore how you can model the tenets of emotional intelligence: Self Awareness, Self Management, Social Awareness, and Social Management for everyone in your organization. We explore ways to create a culture that encourages every team member to attend to their EQ and confidently manage the real life challenges that come with being an educator. Together we identify ways to support one another and create an ongoing conversation that centers the well being of all team members. If you model EQ and provide space for your team to build their EQ, everyone benefits.

Offered as a 1/2 day or full day workshop.

Ideal audience: Executive Team, Leadership Team, Faculty and Staff.

**Includes a Bravo cc EQ Assessment.*



LIBBY'S SPEAKER PROFILE

Her style is relaxed, fun, and a little cheeky. A natural storyteller, Libby connects to the audience with vivid and relatable content. Whether she is sharing an Olan Mills family picture, professing her love for Dolly Parton, or sharing an anecdote where she committed an epic fail, Libby never takes herself too seriously. You don't just have fun though, you leave with content that is actionable and game changing.

SEE HER IN ACTION at
www.youtube.com/libbybravo



THE IDEAL AUDIENCE

Libby loves to speak at: Back to School Convocations, Professional Development Events, and Professional conferences.

Libby loves to speak to: Public School educators and Higher Education teams who get it and want help getting there. Organizations that actively support the growth and development of their faculty and staff in order to help their team to grow, transform, and lead.

EDUCATION

Region 10
Gonzales ISD
Duncanville ISD
Lubbock Cooper ISD
McKinney ISD
University of Texas
Brookhaven College
Texas Christian University

Celina ISD
Terrell ISD
Edgewood ISD
Ysleta ISD
TASA/TASB
University of North Texas

CORPORATE

Southwest Airlines
Dell
Jacobs
Husch Blackwell
Wells Fargo
Denbury Oil and Gas
Elbit Power Systems
Overhead Door
CoServ Electric
City of Lewisville
Cunningham Architects
Essilor International
Labinal Power Systems
FCM Travel Solutions
PenTex Energy
Pogue Construction
McKinley County
Bandera Electric Coop
BRW Architects

GameStop
Stantec
Sabre Travel Network
Alliance Data
Lockheed Martin
SRA Architects
DATCU Credit Union
VLK Architects
Peterbilt Motors
Core Logic
Brazos River Authority
Romark Logistics
Accenture
Texas Mutual
JCPenney
Kroger
Transit Wireless
Omnicracs
Flight Centre Travel Group

HEALTHCARE

Bozeman Health, Bozeman Montana
HCA Dallas HCA Houston, Texas
Texas Health Resources, Dallas, Texas
Texas Health Resources, Plano, Texas
Texas Health Resources, Rockwall, Texas
Texas Health Resources Arlington, Texas
TONE: Texas Organization of Nursing Executives Texas Health Harris
Methodist Hospital, Houston Texas
Denton Regional Hospital, Denton Texas
National Perinatal Leadership Forum
Atlanta Children's Hospital, Atlanta Georgia
Oncology Nursing Society
Doctors Hospital at Renaissance, Texas
Nursing Management Congress
National Dental Association
JPS Health, Dallas Texas
Baylor, Scott, and White, Dallas Texas
Woodland Heights Medical Center, Texas

CHAMBERS & ASSOCIATIONS

National/International:

YPO United States
YPO Canada
GMIS International
AILD Association of International Lighting Designers
APRO Association of Rent to Own Owners
IOM Institute of Organization Management
ACCE Association of Chamber of Commerce Executives
US Chamber of Commerce
NBAA National Business Aviation Association

YPO Australia
YPO South America

Regional:

Texas Chamber of Commerce Executives
Oklahoma Chamber of Commerce Executives
Michigan Chamber of Commerce Executives
MAKO Chamber of Commerce Executives: (Missouri, Arkansas, Kansas, Oklahoma)
Carolinas Association of Chamber of Commerce Executives
Alabama Chamber of Commerce Executives
N. Carolina Chamber of Commerce Executives
York County Regional Chamber of Commerce
Fort Bend Regional Chamber of Commerce
Texas Business Association
Texas Association of Convention/Visitors Bureaus
Pennsylvania Insurance Association
Insurance Agents Association of Ohio
MSSA
WACE: Western Association of Chamber Executives
TEC: Texas Electric Cooperative Association
Catawba County Chamber of Commerce
Mississippi Economic Council
Arkansas State Chamber Executives

Local:

McKinley County Chamber of Commerce
Lewisville Chamber of Commerce
Metrocrest Chamber of Commerce , Texas
McKinney, Texas Chamber of Commerce
Edmond, Oklahoma Chamber of Commerce
North San Antonio, Texas Chamber of Commerce
Colombia, Missouri Chamber of Commerce
Little Rock, Arkansas Chamber of Commerce
Plainview, Texas Chamber of Commerce
SMPS: Society for Marketing Professional Services
Fort Worth, Texas Chamber of Commerce
Killeen, Texas Chamber of Commerce
Holland, Michigan Chamber of Commerce
Farmington, New Mexico Chamber of Commerce
Ada, Oklahoma Chamber of Commerce
Ames, Iowa Chamber of Commerce
Lubbock, Texas Chamber of Commerce
Wichita Falls, Texas Chamber of Commerce
Alamosa, Colorado Chamber of Commerce
Plano, Texas Chamber of Commerce
Irving, Texas Chamber of Commerce
Paducah, Kentucky Chamber of Commerce
Rockwall Chamber of Commerce
Abilene, Texas Young Professionals Conference
Midland, Texas Chamber of Commerce

"I have been telling folks about you and how great you are!
You are really good at what you do."

Dr. Eduardo Hernandez, Superintendent, Edgewood ISD

"I recommend Libby to all my K-12 clients. Libby's passion and calling to educate is unmatched. From the stage she captivates the audience and leaves them energized. Working with district leaders she challenges them to be courageous. She is a fierce advocate for educators and students."

**Lizzy Asbury, Founder
Transcend4**

"Libby I am certain all the staff from George Herbert Walker Bush Elementary left the room motivated and filled with a positive attitude for supporting one another and fostering an environment of inclusivity and respect! Thank you for your message that every kid is a good kid! What a great way to start their year!"

**Erin Carney, CEO Metrocrest
Chamber of Commerce**

"Wow! Wow! Wow! That is the most fun we have had in a long time. You have an amazing gift. Thank you for sharing it with us!" **Cheri Nettles, Lubbock Cooper**

"I have never seen our students this fired up! The activities you did with them (including the spontaneous dance contest) is something that will prepare them for their upcoming job searches! Thank you so much!" **Kerri Ressler, University of Texas at Arlington**

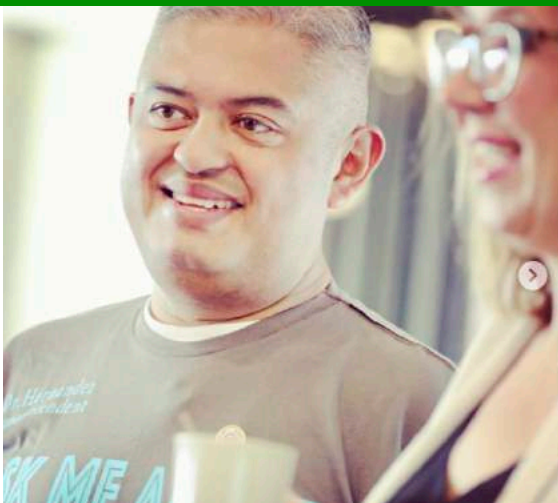
"Libby, our staff was buzzing all day after your amazing workshop! Thank you for getting us fired up and ready to start the new year!"

Lori Sitzes, Celina ISD

"Your message resonated throughout our staff. What a great day of learning. We can't wait to get in the classroom and use your ideas!" **Kim Strozier, Gonzales ISD**

"This is exactly what our team needed. Thank you for sharing with us ideas on how we can prioritize student success. We will all be telling better stories to connect to why we do this work!"

**Uyen Trans Parsons,
University of North Texas**



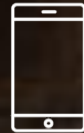
LET'S HANG OUT 2022



lspears@bravocc.com



www.bravocc.com



972.754.6023

CLICK TO CONNECT

